
PROFILE OF 2010-11 GRADUATES



Office of Institutional Research
August 2011

UNC Asheville Graduate Profile 2010-11
EXECUTIVE SUMMARY

- ◆ During the 2010-11 academic year, UNC Asheville graduated 691 students, including 6 Master of Liberal Arts students.
- ◆ 58% of 2010-11 graduates were female, 7.7% were minority students and 89.9% were residents of North Carolina, including 52.1% from western North Carolina. Fifty-five percent of the baccalaureate degrees were awarded to graduates who matriculated as new freshmen. Seventy-five percent of the baccalaureate graduates were of traditional age (< 25).
- ◆ The UNC Asheville academic area with the most graduates in 2010-11 was Social Sciences (50%), followed by Humanities (33%) and Natural Sciences (25%). Note that Teacher Certification students are included in Social Sciences and that double majors and Teacher Certification students are double counted within respective academic areas.
- ◆ Majors with the most graduates during 2010-11 are given below. (Double majors are counted twice, once within each major.)

<u>Major</u>	<u>Number</u>	<u>Percent</u>
Psychology	88	12.7
Literature	57	8.2
Environmental Studies	50	7.2
Art	41	5.9
Management	40	5.8

- ◆ The percentage of baccalaureate graduates receiving a degree in a traditional liberal arts field was 70.4%.
- ◆ The four, five and six year graduation rates for new full-time fall freshmen from the 2007, 2006 and 2005 cohorts are as follows:

<u>Cohort Year</u>	<u>Graduation Rate</u>
2007 (4 year)	36.9%
2006 (5 year)	50.4%
2005 (6 year)	60.7%

- ◆ Over the last five years, graduates entering as new freshmen took a mean of 4.6 years to graduate. Among the 2010-11 graduates matriculating as new freshmen, 58.3% graduated in four years or less.
- ◆ Over the last five years, graduates who first enrolled as new freshmen completed a mean of 131.8 hours at UNC Asheville. Graduates in Biology, Chemistry, Classics, German, Industrial Engineering Management, Mechatronics and Physics completed 140 or more hours on average.
- ◆ Forty-seven of the 2010-11 graduates completed requirements for teacher licensure at graduation. An additional 35 post-baccalaureate students were recommended for licensure during the 2010-11 academic year, including five students who were graduated from UNC Asheville prior to completing licensure requirements.
- ◆ 16.4% percent of the 2010-11 baccalaureate graduates participated in a study abroad program. Sixty-two percent participated in an undergraduate research or creative project. Fifty-eight percent participated in a service learning project.
- ◆ Most frequently declared clusters from the 2007-8 through 2010-11 baccalaureate graduates in the ILS program were: CL04 (Perception: Senses, Self and Society), CL02 (The Science and Politics of Human Health and Illness) and CL01 (Globalization and Environmental Issues).

Table 1
UNC Asheville Graduate Profile
2010-2011 Graduates

Major	Total Grads		Age	Gender		Race/Ethnicity									Region				
			< 25	Female	Male	White	Black	Hispanic	Asian	Pacific Islander	Am. Indian	Multi-racial	International	Unk	WNC	Piedmont	East NC	Out-of-State	International
	N	%	%	%	%	%	%	%	%	%	%	%	%	%	%	%	%	%	
Psychology	88	12.7	78.4	81.8	18.2	93.2	3.4	-	-	-	-	2.3	-	1.1	58.0	27.3	4.5	10.2	-
Literature	57	8.2	75.4	70.2	29.8	94.7	1.8	1.8	-	-	-	-	1.8	-	42.1	38.6	12.3	5.3	1.8
Environ Studies	50	7.2	66.0	60.0	40.0	92.0	2.0	2.0	-	-	-	2.0	2.0	-	56.0	20.0	4.0	18.0	2.0
Education	47	6.8	85.1	72.3	27.7	89.4	2.1	-	2.1	-	-	2.1	-	4.3	61.7	31.9	4.3	2.1	-
Art	41	5.9	73.2	82.9	17.1	97.6	-	-	2.4	-	-	-	-	-	53.7	31.7	2.4	12.2	-
Management	40	5.8	80.0	50.0	50.0	77.5	10.0	2.5	-	-	-	2.5	5.0	2.5	45.0	30.0	10.0	10.0	5.0
Mass Comm	37	5.4	75.7	56.8	43.2	73.0	2.7	5.4	2.7	-	-	-	2.7	13.5	59.5	21.6	10.8	5.4	2.7
Sociology	36	5.2	55.6	63.9	36.1	88.9	5.6	2.8	-	2.8	-	-	-	-	52.8	41.7	2.8	2.8	-
Health/Wellness	35	5.1	74.3	71.4	28.6	88.6	8.6	-	2.9	-	-	-	-	-	60.0	31.4	-	8.6	-
Political Sci	33	4.8	81.8	51.5	48.5	90.9	3.0	3.0	-	-	-	-	-	3.0	30.3	45.5	6.1	18.2	-
Biology	31	4.5	74.2	58.1	41.9	87.1	-	3.2	-	-	3.2	-	-	6.5	61.3	25.8	-	12.9	-
History	28	4.1	85.7	60.7	39.3	82.1	3.6	3.6	3.6	-	-	-	-	7.1	42.9	46.4	-	10.7	-
Mathematics	28	4.1	78.6	46.4	53.6	85.7	-	-	3.6	-	-	3.6	-	7.1	67.9	28.6	-	3.6	-
Spanish	24	3.5	79.2	79.2	20.8	83.3	-	-	4.2	-	-	-	8.3	4.2	45.8	37.5	-	8.3	8.3
Interdisp Studies	20	2.9	85.0	90.0	10.0	80.0	-	10.0	5.0	-	-	-	-	5.0	30.0	45.0	5.0	20.0	-
Accounting	19	2.7	52.6	47.4	52.6	94.7	-	-	-	-	-	-	-	5.3	73.7	15.8	5.3	5.3	-
Music Technology	19	2.7	78.9	5.3	94.7	94.7	-	5.3	-	-	-	-	-	-	52.6	36.8	5.3	5.3	-
Multimedia	17	2.5	64.7	23.5	76.5	82.4	5.9	-	-	-	5.9	-	-	5.9	41.2	41.2	11.8	5.9	-
Drama	16	2.3	100.0	68.8	31.3	81.3	-	12.5	-	-	-	-	-	6.3	18.8	50.0	18.8	12.5	-
Economics	15	2.2	86.7	40.0	60.0	86.7	-	6.7	-	-	-	-	-	6.7	46.7	53.3	-	-	-
French	14	2.0	92.9	71.4	28.6	71.4	-	7.1	7.1	-	-	-	-	14.3	28.6	50.0	7.1	14.3	-
Computer Sci	12	1.7	91.7	-	100.0	83.3	8.3	-	8.3	-	-	-	-	-	41.7	58.3	-	-	-
Philosophy	11	1.6	72.7	36.4	63.6	90.9	-	9.1	-	-	-	-	-	-	54.5	36.4	-	9.1	-
Atmospheric Sci	10	1.4	90.0	10.0	90.0	90.0	10.0	-	-	-	-	-	-	-	30.0	20.0	30.0	20.0	-
Chemistry	10	1.4	60.0	50.0	50.0	80.0	-	-	10.0	-	-	10.0	-	-	100.0	-	-	-	-
Mechatronics	7	1.0	57.1	14.3	85.7	100.0	-	-	-	-	-	-	-	-	57.1	14.3	-	28.6	-
Music	7	1.0	100.0	14.3	85.7	100.0	-	-	-	-	-	-	-	-	57.1	42.9	-	-	-
Women's, Gender,	7	1.0	71.4	100.0	-	71.4	-	14.3	14.3	-	-	-	-	-	57.1	14.3	14.3	14.3	-
Classics	6	0.9	66.7	33.3	66.7	100.0	-	-	-	-	-	-	-	-	33.3	50.0	16.7	-	-
Liberal Arts (MLA)	6	0.9	0.0	50.0	50.0	83.3	-	-	16.7	-	-	-	-	-	83.3	16.7	-	-	-
Religious Studies	5	0.7	60.0	20.0	80.0	100.0	-	-	-	-	-	-	-	-	60.0	40.0	-	-	-
Physics	4	0.6	50.0	25.0	75.0	100.0	-	-	-	-	-	-	-	-	75.0	25.0	-	-	-
German	3	0.4	100.0	66.7	33.3	100.0	-	-	-	-	-	-	-	-	33.3	66.7	-	-	-
Indus Engr Mgmt	2	0.3	100.0	-	100.0	100.0	-	-	-	-	-	-	-	-	50.0	50.0	-	-	-
UNCA	691	100.0	74.2	57.7	42.3	88.7	2.7	2.3	1.6	0.1	0.3	0.7	0.7	2.7	52.1	32.4	5.4	9.4	0.7

Double majors and teacher certification students counted in each major but not double counted in total

Table 2
Graduates by Academic Year and Term

	Summer	Fall	Spring	Total
1981-82	27	32	99	158
1982-83	23	36	113	172
1983-84	31	50	122	203
1984-85	38	46	135	219
1985-86	42	43	142	227
1986-87	53	62	151	266
1987-88	50	83	173	306
1988-89	50	83	194	327
1989-90	58	69	191	318
1990-91	36	92	228	356
1991-92	50	94	265	409
1992-93	42	108	292	442
1993-94	53	113	323	489
1994-95	39	129	288	456
1995-96	47	125	298	470
1996-97	47	121	349	517
1997-98	36	120	340	496
1998-99	35	130	311	476
1999-00	32	123	352	507
2000-01	36	123	350	509
2001-02	25	145	338	508
2002-03	34	153	389	576
2003-04	28	155	413	596
2004-05	33	153	391	577
2005-06	32	170	361	563
2006-07	41	160	381	582
2007-08	33	215	467	715
2008-09	26	221	365	612
2009-10	34	207	436	677
2010-11	32	212	447	691

Figure 1: Degrees Awarded by Academic Year

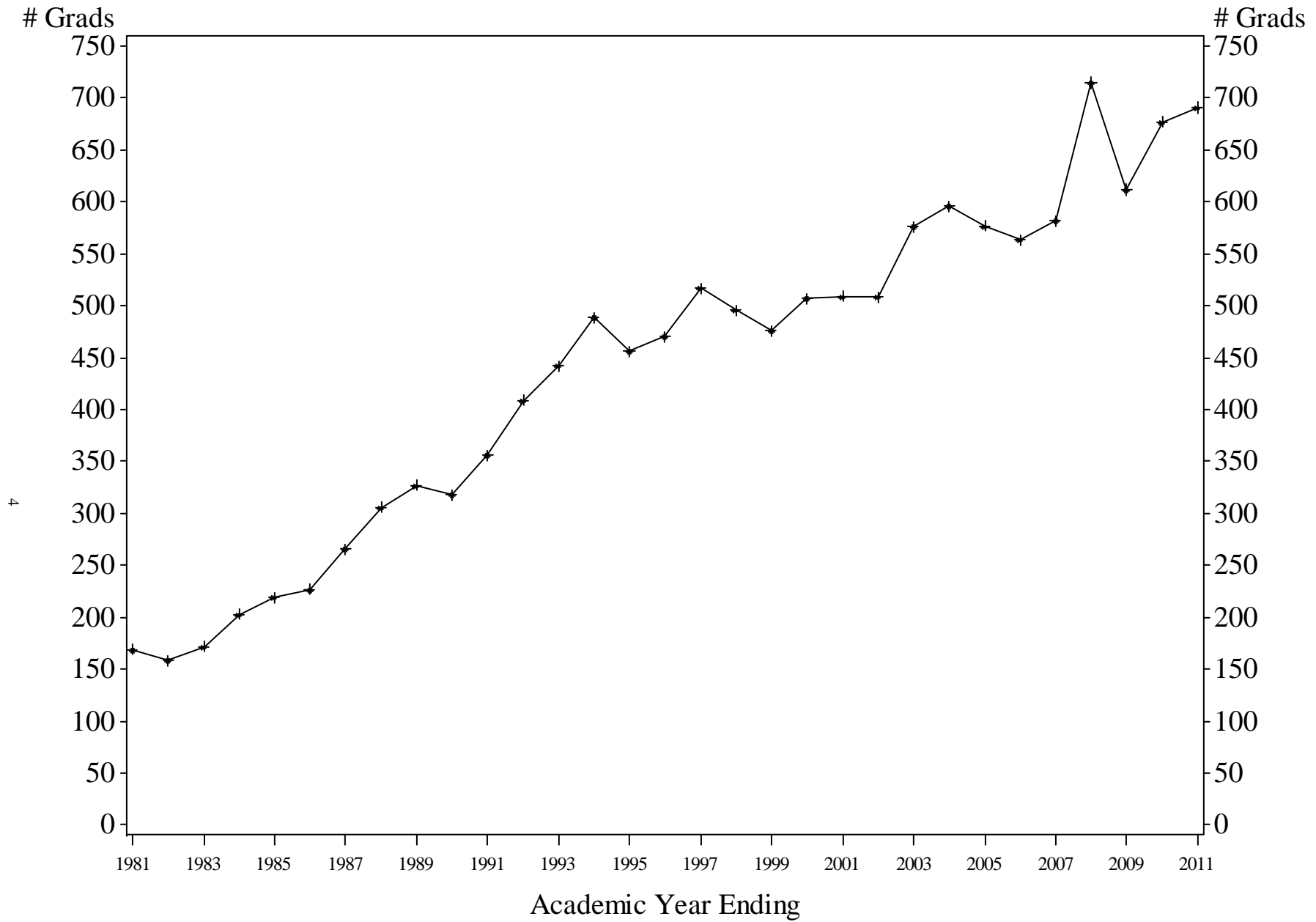


Table 3
UNC Asheville Graduates by Major: Ten Year Trend

	Academic Year										All Years
	2001-02	2002-03	2003-04	2004-05	2005-06	2006-07	2007-08	2008-09	2009-10	2010-11	
Accounting	19	15	18	13	17	16	11	12	19	19	159
Art	28	22	21	20	44	35	42	35	51	41	339
Atmospheric Sci	13	20	9	18	7	14	22	14	11	10	138
Biology	20	27	23	33	31	31	37	29	34	31	296
Chemistry	10	17	6	5	9	11	14	5	6	10	93
Classics	2	2	5	4	9	2	1	6	7	6	44
Computer Sci	24	33	18	26	11	19	4	8	5	12	160
Drama	12	8	11	14	4	10	14	16	13	16	118
Economics	24	16	18	12	9	15	16	19	16	15	160
Education	20	27	23	27	40	28	35	42	31	47	320
Environ Studies	37	48	51	39	38	25	55	42	36	50	421
French	2	5	5	2	6	6	3	4	2	14	49
German	1	1	3	4	6	4	2	2	2	3	28
Health/Wellness Promotion					1	7	29	36	41	35	149
History	23	20	45	28	27	20	39	33	34	28	297
Indus Engr Mgmt	5	1	3	4	3	0	2	2	4	2	26
Interdisp Studies	2	17	21	21	22	16	7	12	16	20	154
Liberal Arts (MLA)	7	5	7	1	4	4	11	6	5	6	56
Literature	36	32	27	49	42	52	58	46	52	57	451
Management	61	50	56	63	37	58	55	29	57	40	506
Mass Comm	12	25	47	42	32	38	47	37	31	37	348
Mathematics	11	21	9	20	22	24	21	30	15	28	201
Mechatronics								3	5	7	15
Multimedia	11	33	33	26	21	17	34	23	28	17	243
Music	11	3	8	9	6	11	5	7	4	7	71
Music Technology	2	16	6	10	11	6	9	10	7	19	96
Philosophy	5	10	5	8	10	9	6	8	12	11	84
Physics	6	3	3	4	5	2	8	5	5	4	45
Political Sci	22	26	21	13	19	29	31	26	29	33	249
Psychology	73	85	78	77	87	95	103	87	97	88	870
Religious Studies									3	5	8
Sociology	37	32	39	19	30	26	37	43	34	36	333
Spanish	16	12	29	17	16	17	26	25	22	24	204
Women, Gender, Sexuality Studies					2	4	2	3	2	7	20
UNCA	508	576	596	577	563	582	715	612	677	691	6,097

Double majors and teacher certification students counted in each major but not double counted in total

Table 4
Graduates by Academic Area and Major: Five Year Trend

Academic Area	Major	2006-07		2007-08		2008-09		2009-10		2010-11	
		N	%	N	%	N	%	N	%	N	%
Social Sciences	Accounting	16	2.7	11	1.5	12	2.0	19	2.8	19	2.7
	Economics	15	2.6	16	2.2	19	3.1	16	2.4	15	2.2
	Education	28	4.8	35	4.9	42	6.9	31	4.6	44	6.4
	Health/Wellness Promotion	7	1.2	29	4.1	36	5.9	41	6.1	35	5.1
	Indus Engr Mgmt			2	0.3	2	0.3	4	0.6	2	0.3
	Management	58	10.0	55	7.7	29	4.7	57	8.4	40	5.8
	Mass Comm	38	6.5	47	6.6	37	6.0	31	4.6	37	5.4
	Political Sci	29	5.0	31	4.3	26	4.2	29	4.3	33	4.8
	Psychology	95	16.3	103	14.4	87	14.2	97	14.3	88	12.7
	Sociology	26	4.5	37	5.2	43	7.0	34	5.0	36	5.2
	Total in Area*	312	53.6	366	51.2	333	54.4	359	53.0	349	50.5
Natural Sciences	Atmospheric Sci	14	2.4	22	3.1	14	2.3	11	1.6	10	1.4
	Biology	31	5.3	37	5.2	29	4.7	34	5.0	31	4.5
	Chemistry	11	1.9	14	2.0	5	0.8	6	0.9	10	1.4
	Computer Sci	19	3.3	4	0.6	8	1.3	5	0.7	12	1.7
	Environ Studies	25	4.3	55	7.7	42	6.9	36	5.3	50	7.2
	Mathematics	24	4.1	21	2.9	30	4.9	15	2.2	28	4.1
	Mechatronics					3	0.5	5	0.7	7	1.0
	Multimedia	17	2.9	34	4.8	23	3.8	28	4.1	17	2.5
	Physics	2	0.3	8	1.1	5	0.8	5	0.7	4	0.6
	Total in Area*	143	24.6	195	27.3	159	26.0	145	21.4	169	24.5
Humanities	Art	35	6.0	42	5.9	35	5.7	51	7.5	41	5.9
	Classics	2	0.3	1	0.1	6	1.0	7	1.0	6	0.9
	Drama	10	1.7	14	2.0	16	2.6	13	1.9	16	2.3
	French	6	1.0	3	0.4	4	0.7	2	0.3	14	2.0
	German	4	0.7	2	0.3	2	0.3	2	0.3	3	0.4
	History	20	3.4	39	5.5	33	5.4	34	5.0	28	4.1
	Literature	52	8.9	58	8.1	46	7.5	52	7.7	57	8.2
	Music	11	1.9	5	0.7	7	1.1	4	0.6	7	1.0
	Music Technology	6	1.0	9	1.3	10	1.6	7	1.0	19	2.7
	Philosophy	9	1.5	6	0.8	8	1.3	12	1.8	11	1.6
	Religious Studies							3	0.4	5	0.7
	Spanish	17	2.9	26	3.6	25	4.1	22	3.2	24	3.5
	Total in Area*	172	29.6	205	28.7	192	31.4	209	30.9	231	33.4
Interdisciplinary	Interdisp Studies	16	2.7	7	1.0	12	2.0	16	2.4	20	2.9
	Women's, Gender, Sexuality Stud.	4	0.7	2	0.3	3	0.5	2	0.3	7	1.0
	Total in Area*	20	3.4	9	1.3	15	2.5	18	2.7	27	3.9
Graduate	Liberal Arts (MLA)	4	0.7	11	1.5	6	1.0	5	0.7	6	0.9
UNCA	UNCA*	582	100.0	715	100.0	612	100.0	677	100.0	691	100.0

*Double majors and education licensure students are **double counted** in major and area counts but not in UNCA overall count

Figure 2: Baccalaureate Degrees by UNCA Academic Area
 Double majors counted twice. No Teacher Certification Students are included.

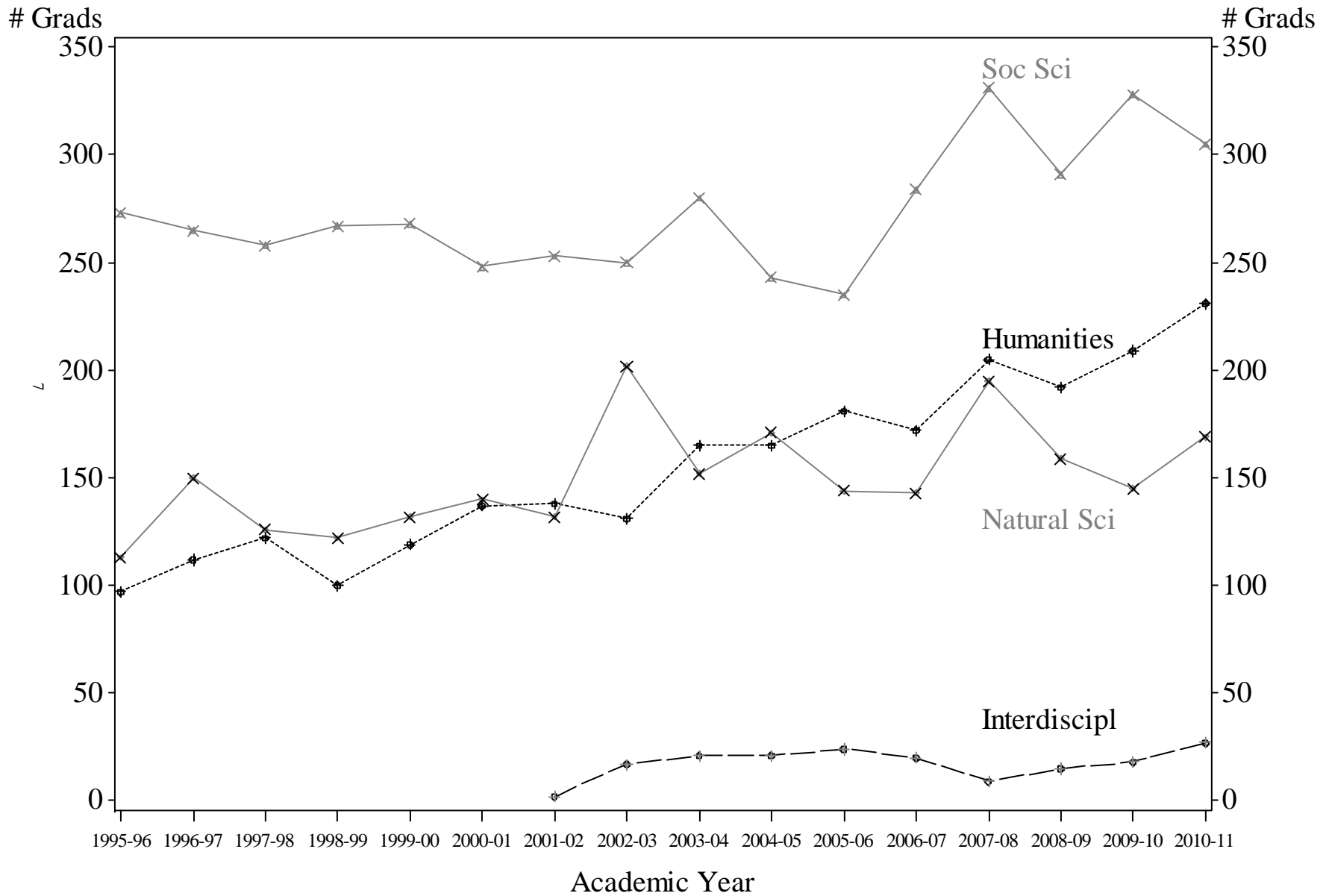


Table 5
Percent of Baccalaureate Degrees in Liberal Arts

Academic Year	Total Degrees Awarded	Liberal Arts Field
		Percent
1995-96	465	67.5
1996-97	512	70.9
1997-98	492	73.2
1998-99	471	67.9
1999-00	502	67.7
2000-01	498	66.5
2001-02	501	68.7
2002-03	571	70.2
2003-04	589	67.6
2004-05	576	63.7
2005-06	559	71.9
2006-07	578	69.6
2007-08	704	67.2
2008-09	606	69.5
2009-10	672	67.7
2010-11	685	70.4
All Years	8,981	68.7

NOTE: Liberal Arts includes all majors except Management, Accounting, Industrial Engineering Management, Computer Science, Multimedia, Engineering, Health and Wellness, Mass Communication and Environmental Science.

Table 6
Distribution of Graduates by Race

Academic Year	White		Black		Hispanic		Asian		Pacific Islander		Am. Indian		Multi-Racial		Other		Unknown		Non-Res Alien		AY Total	
	N	Pct	N	Pct	N	Pct	N	Pct	N	Pct	N	Pct	N	Pct	N	Pct	N	Pct			N	Pct
1995-96	432	91.9	22	4.7	1	0.2	7	1.5	0	0.0	0	0.0	0	0.0	0	0.0	0	0.0	8	1.7	470	100.0
1996-97	470	90.9	14	2.7	13	2.5	7	1.4	0	0.0	3	0.6	0	0.0	2	0.4	0	0.0	8	1.5	517	100.0
1997-98	460	92.7	19	3.8	3	0.6	6	1.2	0	0.0	1	0.2	0	0.0	0	0.0	0	0.0	7	1.4	496	100.0
1998-99	430	90.3	18	3.8	7	1.5	7	1.5	0	0.0	2	0.4	0	0.0	2	0.4	0	0.0	10	2.1	476	100.0
1999-00	465	91.7	20	3.9	9	1.8	6	1.2	0	0.0	1	0.2	0	0.0	1	0.2	0	0.0	5	1.0	507	100.0
2000-01	470	92.3	16	3.1	7	1.4	2	0.4	0	0.0	1	0.2	0	0.0	2	0.4	0	0.0	11	2.2	509	100.0
2001-02	462	90.9	17	3.3	8	1.6	6	1.2	0	0.0	1	0.2	0	0.0	2	0.4	5	1.0	7	1.4	508	100.0
2002-03	535	92.9	10	1.7	7	1.2	6	1.0	0	0.0	3	0.5	0	0.0	8	1.4	3	0.5	4	0.7	576	100.0
2003-04	550	92.3	7	1.2	9	1.5	11	1.8	0	0.0	4	0.7	0	0.0	6	1.0	7	1.2	2	0.3	596	100.0
2004-05	527	91.3	13	2.3	12	2.1	4	0.7	0	0.0	3	0.5	0	0.0	8	1.4	4	0.7	6	1.0	577	100.0
2005-06	505	89.7	9	1.6	7	1.2	12	2.1	0	0.0	0	0.0	0	0.0	9	1.6	9	1.6	12	2.1	563	100.0
2006-07	526	90.4	14	2.4	13	2.2	10	1.7	0	0.0	0	0.0	0	0.0	9	1.5	6	1.0	4	0.7	582	100.0
2007-08	662	92.6	23	3.2	6	0.8	6	0.8	0	0.0	2	0.3	0	0.0	6	0.8	5	0.7	5	0.7	715	100.0
2008-09	542	88.6	14	2.3	15	2.5	9	1.5	0	0.0	3	0.5	0	0.0	13	2.1	15	2.5	1	0.2	612	100.0
2009-10	611	90.3	13	1.9	12	1.8	9	1.3	0	0.0	0	0.0	6	0.9	0	0.0	23	3.4	3	0.4	677	100.0
2010-11	613	88.7	19	2.7	16	2.3	11	1.6	1	0.1	2	0.3	5	0.7	0	0.0	19	2.7	5	0.7	691	100.0
All Years	8,260	91.0	248	2.7	145	1.6	119	1.3	1	0.0	26	0.3	11	0.1	68	0.7	96	1.1	98	1.1	9,072	100.0

Table 7
Distribution of Baccalaureate Degrees by Gender

Academic Year	Female		Male		AY Total	
	N	Pct	N	Pct	N	Pct
1995-96	261	56.1	204	43.9	465	100.0
1996-97	279	54.5	233	45.5	512	100.0
1997-98	284	57.7	208	42.3	492	100.0
1998-99	276	58.6	195	41.4	471	100.0
1999-00	326	64.9	176	35.1	502	100.0
2000-01	288	57.8	210	42.2	498	100.0
2001-02	306	61.1	195	38.9	501	100.0
2002-03	315	55.2	256	44.8	571	100.0
2003-04	364	61.8	225	38.2	589	100.0
2004-05	343	59.5	233	40.5	576	100.0
2005-06	356	63.7	203	36.3	559	100.0
2006-07	337	58.3	241	41.7	578	100.0
2007-08	434	61.6	270	38.4	704	100.0
2008-09	356	58.7	250	41.3	606	100.0
2009-10	402	59.8	270	40.2	672	100.0
2010-11	396	57.8	289	42.2	685	100.0
All Years	5,062	59.4	3,454	40.6	8,516	100.0

Table 8
Distribution of MLA Graduates by Gender

Academic Year	Female		Male		AY Total	
	N	Percent	N	Percent	N	Percent
1995-96	2	40.0	3	60.0	5	100.0
1996-97	4	80.0	1	20.0	5	100.0
1997-98	1	25.0	3	75.0	4	100.0
1998-99	5	100.0	0	0.0	5	100.0
1999-00	4	80.0	1	20.0	5	100.0
2000-01	7	63.6	4	36.4	11	100.0
2001-02	4	57.1	3	42.9	7	100.0
2002-03	3	60.0	2	40.0	5	100.0
2003-04	4	57.1	3	42.9	7	100.0
2004-05	1	100.0	0	0.0	1	100.0
2005-06	1	25.0	3	75.0	4	100.0
2006-07	2	50.0	2	50.0	4	100.0
2007-08	8	72.7	3	27.3	11	100.0
2008-09	5	83.3	1	16.7	6	100.0
2009-10	5	100.0	0	0.0	5	100.0
2010-11	3	50.0	3	50.0	6	100.0
All Years	57	66.3	29	33.7	86	100.0

Table 9
Graduation Rates* for Full-time Freshman Cohorts

Cohort Year	N in Cohort	3 Year Grad Rate	4 Year Grad Rate	5 Year Grad Rate	6 Year Grad Rate
1993	394	0.3	31.7	50.5	55.1
1994	393	0.0	30.3	43.3	48.1
1995	392	0.8	31.4	50.0	53.8
1996	450	0.4	30.9	47.3	50.9
1997	470	0.2	29.1	47.7	51.3
1998	474	0.4	25.5	48.7	51.9
1999	456	0.4	28.1	50.9	53.5
2000	495	0.8	30.9	49.7	53.5
2001	446	0.2	33.2	50.0	53.8
2002	423	0.5	33.1	53.2	59.6
2003	593	0.7	28.7	54.8	58.7
2004	698	0.9	29.8	51.4	55.2
2005	471	0.4	32.7	56.3	60.7
2006	569	0.2	31.6	50.4	
2007	572	0.7	36.9		
2008	586	0.7			

* As reported to IPEDS. Includes summer 2011 graduates.

Table 10
Years To Graduate By Admission Type & Academic Year

Academic Year	Admission Type											
	Entered as Freshmen						Entered as Transfer					
	N	% of Grad Class	Years To Graduate				N	% of Grad Class	Years To Graduate			
Min			Mean	Median	Max	Min			Mean	Median	Max	
1996-97	259	50.6	3.5	4.8	4.0	24.0	253	49.4	1.0	4.2	3.0	20.5
1997-98	245	49.8	3.0	5.2	4.0	31.0	247	50.2	1.0	4.1	3.0	22.0
1998-99	209	44.4	3.0	4.8	4.0	23.5	262	55.6	1.5	4.2	3.5	22.0
1999-00	251	50.0	3.0	5.0	4.0	28.0	251	50.0	1.5	3.8	3.0	15.0
2000-01	261	52.4	3.0	4.7	4.0	20.5	237	47.6	1.5	4.0	3.0	24.0
2001-02	253	50.5	3.0	5.0	4.5	25.0	248	49.5	1.0	4.2	3.5	17.5
2002-03	294	51.5	3.0	4.8	4.5	22.0	277	48.5	1.5	3.9	3.0	20.0
2003-04	301	51.1	3.0	4.9	4.0	18.5	288	48.9	1.5	3.7	3.0	29.0
2004-05	284	49.3	3.0	4.6	4.0	18.0	292	50.7	1.0	3.6	3.0	20.5
2005-06	264	47.2	3.0	4.8	4.0	28.5	295	52.8	1.5	3.9	3.0	30.0
2006-07	307	53.1	3.0	4.5	4.0	16.5	271	46.9	1.5	3.7	3.0	18.0
2007-08	414	58.8	3.0	4.6	4.5	18.0	290	41.2	1.5	3.5	3.0	29.0
2008-09	363	59.9	3.0	4.7	4.5	23.0	243	40.1	1.5	3.6	3.0	21.0
2009-10	351	52.2	2.0	4.7	4.0	20.0	321	47.8	1.5	3.6	3.0	23.0
2010-11	374	54.6	2.0	4.6	4.0	21.0	311	45.4	1.5	3.5	3.0	21.5
All Years	4,430	52.0	2.0	4.8	4.0	31.0	4,086	48.0	1.0	3.8	3.0	30.0

Note: second degrees not counted in years to graduate

Table 11
Years To Graduate By Admission Type & Academic Area
2010-11 Graduates

Academic Area	Admission Type											
	Entered as Freshmen						Entered as Transfer					
	N	% of Area	Years To Graduate				N	% of Area	Years To Graduate			
Min			Mean	Median	Max	Min			Mean	Median	Max	
Humanities	131	63.0	2.0	4.7	4.0	16.5	77	37.0	1.5	3.9	3.0	18.0
Interdisciplinary	8	38.1	4.0	4.1	4.0	4.5	13	61.9	2.0	3.2	3.0	5.0
Natural Sciences	95	57.6	3.0	4.7	4.0	14.5	70	42.4	2.0	3.6	3.5	10.0
Social Sciences	140	48.1	3.0	4.6	4.0	21.0	151	51.9	1.5	3.3	3.0	21.5
UNCA Total	374	54.6	2.0	4.6	4.0	21.0	311	45.4	1.5	3.5	3.0	21.5

Note: second degrees not counted in years to graduate

Figure 3: Graduates by Matriculation Student Type

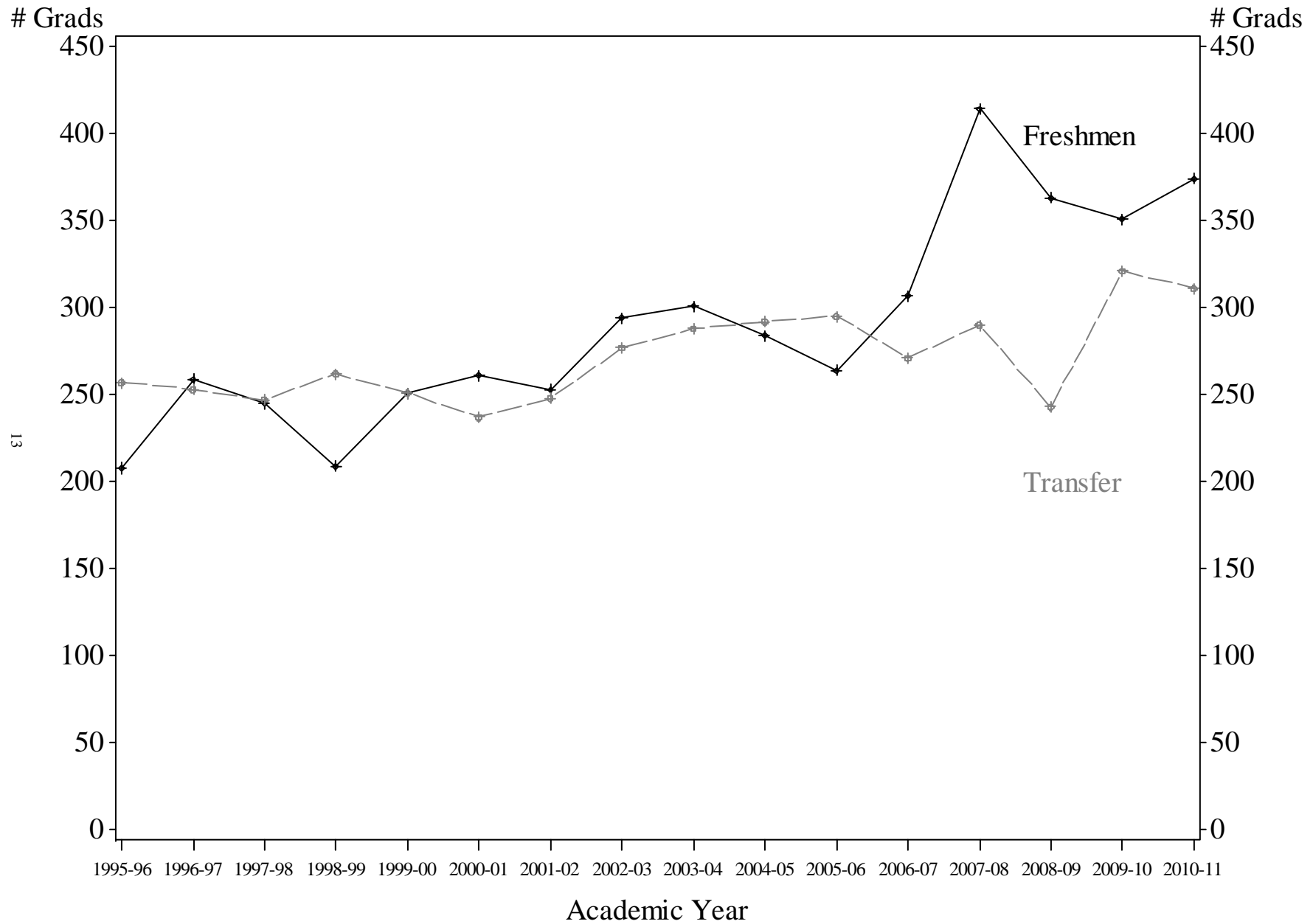


Table 12
Years to Graduate by Major for Graduates Entering as New Freshmen: Five Year Trend

Major	2006-07		2006-07		2008-09		2009-10		2010-11		All years	
	N	Mean	N	Mean	N	Mean	N	Mean	N	Mean	N	Mean
Accounting	6	4.6	6	4.5	2	4.3	6	5.2	8	5.1	28	4.8
Art	17	5.9	18	5.2	18	5.0	23	4.8	19	5.2	95	5.2
Atmospheric Sci	10	4.1	15	4.3	11	4.2	4	4.1	7	4.1	47	4.2
Biology	18	4.5	24	5.4	21	4.8	15	5.4	16	4.5	94	4.9
Chemistry	8	5.3	8	4.6	5	7.9	3	4.5	3	6.5	27	5.6
Classics	1	4.0	-	-	6	4.9	5	4.6	5	5.1	17	4.8
Computer Sci	5	4.9	3	4.3	6	4.7	1	6.0	6	6.2	21	5.2
Drama	9	4.2	9	4.2	11	4.3	8	4.3	14	4.5	51	4.3
Economics	10	4.8	7	4.4	13	4.9	11	4.3	10	5.6	51	4.8
Education	22	4.5	28	4.7	34	4.5	17	4.2	35	4.7	136	4.6
Environ Studies	12	4.4	32	4.5	22	4.6	21	4.6	27	4.8	114	4.6
French	3	4.3	1	4.5	2	4.5	2	4.0	12	4.4	20	4.4
German	4	4.3	2	5.0	-	-	2	5.0	3	4.5	11	4.6
History	13	5.2	25	4.6	15	4.5	20	5.1	22	4.3	95	4.7
Health/Wellness Promotion	5	4.6	10	4.3	23	4.5	28	4.3	14	4.3	80	4.4
Indus Engr Mgmt	-	-	2	4.5	1	22.0	1	5.5	-	-	4	9.1
Interdisp Studies	9	4.8	4	5.6	9	4.7	7	4.6	10	4.3	39	4.7
Literature	23	4.2	33	4.6	32	4.4	33	4.2	38	4.5	159	4.4
Mathematics	12	4.3	14	4.4	23	5.4	7	4.4	19	4.2	75	4.6
Mass Comm	21	4.5	35	4.5	17	4.4	11	5.8	17	4.4	101	4.6
Mechatronics	-	-	-	-	3	5.0	4	5.3	4	5.0	11	5.1
Management	27	4.6	38	4.7	19	4.7	31	4.6	18	4.3	133	4.6
Multimedia	7	4.4	18	4.2	11	4.7	14	4.4	10	4.4	60	4.4
Music	6	5.2	4	4.1	6	4.8	2	12.8	4	4.4	22	5.4
Music Technology	4	4.4	7	4.9	5	4.5	5	5.0	12	5.5	33	5.0
Philosophy	6	3.9	3	3.8	4	5.4	9	4.8	8	5.8	30	4.9
Physics	2	5.0	6	4.8	2	4.5	4	4.8	2	4.8	16	4.8
Political Sci	22	4.4	22	4.5	20	4.3	15	4.3	22	4.4	101	4.4
Psychology	54	4.1	55	4.6	54	4.4	51	4.6	50	4.7	264	4.5
Religious Studies	-	-	-	-	-	-	2	4.0	2	4.0	4	4.0
Sociology	15	4.7	24	4.5	25	5.0	18	4.3	14	5.1	96	4.7
Spanish	9	4.0	16	4.7	16	4.2	12	5.0	13	4.7	66	4.5
Women's, Gender, Sexuality Studie	3	4.0	2	4.5	2	4.3	1	4.5	4	5.9	12	4.8
UNCA	307	4.5	414	4.6	362	4.7	350	4.7	372	4.6	1,805	4.6

Figure 4: Distribution of Years to Graduate (Elapsed Time)
 2011 Graduates Who Matriculated as New Freshmen

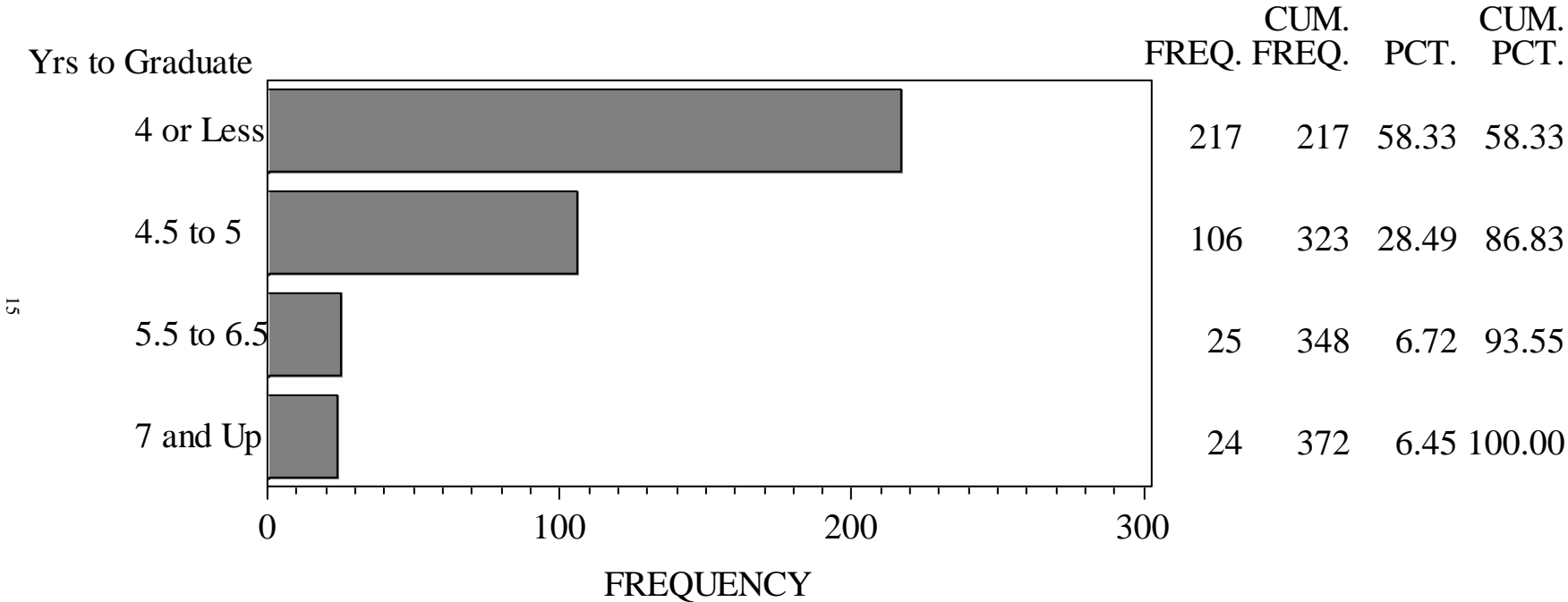


Table 13
Cumulative Hours Earned by Graduates Entering UNC Asheville as New Freshmen

Major	2006-07		2007-08		2008-09		2009-10		2010-11		All years	
	N	Mean	N	Mean	N	Mean	N	Mean	N	Mean	N	Mean
Physics	2	175.0	6	148.5	2	153.5	4	140.8	2	130.0	16	148.2
Chemistry	8	158.1	8	141.9	5	148.8	3	140.7	3	137.0	27	147.3
Indus Engr Mgmt			2	142.5	1	154.0	1	146.0			4	146.3
German	4	146.6	2	147.5			2	138.5	3	142.2	11	144.1
Classics	1	152.0			6	146.2	5	140.4	5	142.8	17	143.8
Mechatronics					3	144.0	4	150.0	4	136.0	11	143.3
Biology	18	140.1	24	139.2	21	145.3	15	137.7	16	141.3	94	140.9
Music	6	136.7	4	148.5	6	139.0	2	131.5	4	139.4	22	139.5
Music Technology	4	135.5	7	132.6	5	143.8	5	150.8	12	137.8	33	139.3
Art	17	148.0	18	136.0	18	138.4	23	134.0	19	141.1	95	139.1
Education	22	136.3	28	140.3	34	140.5	17	132.7	35	138.5	136	138.3
Interdisp Studies	9	130.9	4	143.5	9	139.1	7	132.4	10	142.2	39	137.3
Philosophy	6	125.0	3	130.3	4	154.8	9	132.8	8	142.4	30	136.5
Mathematics	11	137.5	14	131.1	23	143.2	7	131.3	19	132.7	74	136.2
Environ Studies	12	137.7	31	135.1	22	138.2	21	135.3	27	134.4	113	135.8
Spanish	9	134.9	16	134.3	16	131.4	12	139.8	13	132.1	66	134.2
French	3	135.0	1	138.0	2	132.5	2	125.3	12	135.2	20	134.1
Atmospheric Sci	9	132.2	15	131.5	11	130.5	4	134.5	7	141.9	46	133.2
Economics	10	130.7	7	127.6	13	140.5	11	128.5	10	134.2	51	133.0
Drama	9	132.9	9	132.4	11	137.6	8	125.4	14	133.9	51	132.9
History	13	129.8	25	131.0	15	132.5	20	130.7	22	135.6	95	132.0
Accounting	6	130.8	6	133.0	2	129.5	5	137.4	8	128.8	27	131.8
Political Sci	21	134.7	22	130.5	20	134.6	15	130.3	22	128.0	100	131.6
Management	26	126.7	37	129.7	19	133.8	29	133.6	18	133.0	129	131.0
Literature	23	133.7	33	129.7	32	129.1	33	130.1	38	132.4	159	130.9
Sociology	15	125.7	24	131.5	25	135.2	18	131.6	14	125.7	96	130.7
Religious Studies							2	121.5	2	139.5	4	130.5
Women's, Gender, Sexuality Stu	3	127.0	2	130.5	2	123.5	1	128.0	4	136.8	12	130.3
Mass Comm	21	128.7	35	128.8	17	134.0	11	127.8	17	131.5	101	130.0
Health/Wellness Promotion	5	137.0	10	123.3	23	132.3	28	127.8	14	131.8	80	129.8
Computer Sci	5	126.2	3	128.7	6	130.2	1	161.0	6	127.2	21	129.6
Psychology	54	126.5	55	128.1	53	128.6	51	126.9	50	127.5	263	127.5
Multimedia	7	126.0	18	124.2	11	127.5	14	126.1	10	124.9	60	125.6
UNCA	305	131.4	414	130.8	361	133.3	350	131.1	372	132.2	1802	131.8

Students receiving certification in Education are counted in their major field as well as Education.

University Total is unduplicated. Students receiving second degree at UNCA not included.

Figure 5: Distribution of Cumulative Hours Earned (Transfer Students Excluded)

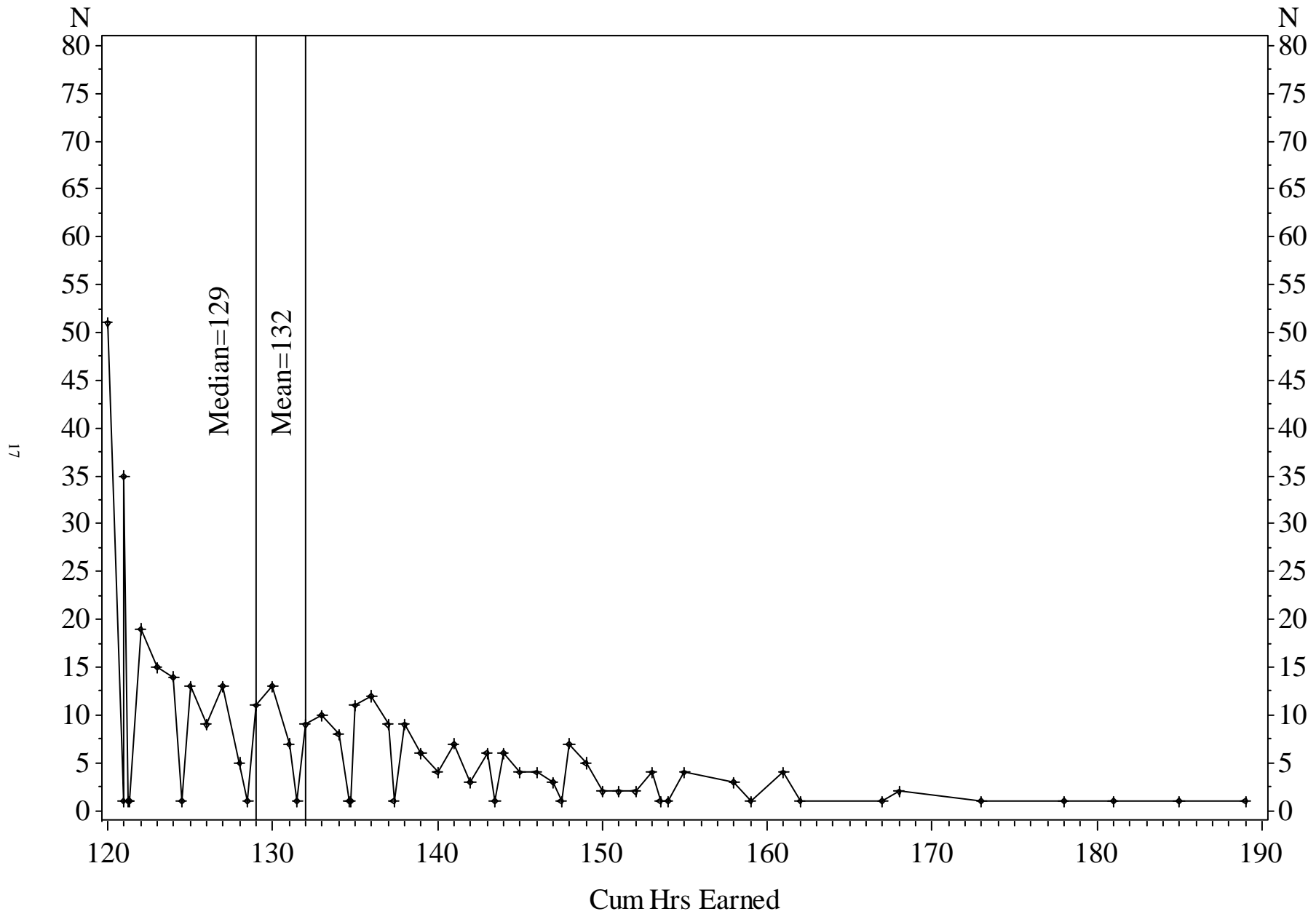


Table 14
Transfer Graduates by Institution Type

Institution Type			2006-07		2007-08		2008-09		2009-10		2010-11	
			N	%	N	%	N	%	N	%	N	%
North Carolina	Public	Senior Institutions	41	15.1	43	14.8	34	14.0	40	12.5	47	15.3
		Community Colleges	135	49.8	135	46.6	122	50.2	164	51.1	171	55.5
		Other	1	0.4					2	0.6		
	Private	Senior Institutions	23	8.5	15	5.2	9	3.7	26	8.1	22	7.1
		Junior Institutions							1	0.3	1	0.3
		Other	1	0.4	1	0.3			2	0.6	1	0.3
	Other	Unknown			1	0.3	1	0.4				
Total			201	74.2	195	67.2	166	68.3	235	73.2	242	78.6
Out-of-State	Public	Senior Institutions	28	10.3	39	13.4	33	13.6	34	10.6	24	7.8
		Junior Institutions	21	7.7	28	9.7	18	7.4	26	8.1	18	5.8
		Other			1	0.3	2	0.8			1	0.3
	Private	Senior Institutions	14	5.2	20	6.9	15	6.2	20	6.2	18	5.8
		Junior Institutions	3	1.1	1	0.3	1	0.4	1	0.3		
		Other			4	1.4	3	1.2	4	1.2	2	0.6
	Other	Foreign Institutions	2	0.7			4	1.6	1	0.3	2	0.6
		Unknown	2	0.7	1	0.3	1	0.4			1	0.3
		Other			1	0.3						
	Total			70	25.8	95	32.8	77	31.7	86	26.8	66
Grand Total All Institutions			271	100.0	290	100.0	243	100.0	321	100.0	308	100.0

Table 15
Students Completing Requirements for Teacher Certification

Academic Year	BA		BFA		BS		Post Bach (UNCA Grad)		Other Post Bach		AY Total	
	N	Percent	N	Percent	N	Percent	N	Percent	N	Percent	N	Percent
1988-89	10	47.6					1	4.8	10	47.6	21	100.0
1989-90	8	27.6					5	17.2	16	55.2	29	100.0
1990-91	16	39.0					5	12.2	20	48.8	41	100.0
1991-92	14	35.9					5	12.8	20	51.3	39	100.0
1992-93	15	46.9			1	3.1	10	31.3	6	18.8	32	100.0
1993-94	22	45.8			1	2.1	9	18.8	16	33.3	48	100.0
1994-95	29	48.3					13	21.7	18	30.0	60	100.0
1995-96	30	46.2	1	1.5	1	1.5	18	27.7	15	23.1	65	100.0
1996-97	21	45.7					13	28.3	12	26.1	46	100.0
1997-98	22	35.5			3	4.8	18	29.0	19	30.6	62	100.0
1998-99	14	31.1					18	40.0	13	28.9	45	100.0
1999-00	28	57.1					6	12.2	15	30.6	49	100.0
2000-01	21	32.8			1	1.6	18	28.1	24	37.5	64	100.0
2001-02	20	36.4					17	30.9	18	32.7	55	100.0
2002-03	27	39.7					11	16.2	30	44.1	68	100.0
2003-04	23	41.1					15	26.8	18	32.1	56	100.0
2004-05	25	41.7			2	3.3	15	25.0	18	30.0	60	100.0
2005-06	37	47.4			3	3.8	19	24.4	19	24.4	78	100.0
2006-07	25	39.7			3	4.8	12	19.0	23	36.5	63	100.0
2007-08	32	54.2	2	3.4	2	3.4	13	22.0	10	16.9	59	100.0
2008-09	35	47.9			7	9.6	13	17.8	18	24.7	73	100.0
2009-10	34	41.0			2	2.4	17	20.5	30	36.1	83	100.0
2010-11	41	50.0			6	7.3	5	6.1	30	36.6	82	100.0
All Years	549	43.0	3	0.2	32	2.5	276	21.6	418	32.7	1278	100.0

Table 16
Graduates Completing Teacher Certification Program by Major

Major	2006-07		2007-08		2008-09		2009-10		2010-11		5 Yr Total	
	N	%	N	%	N	%	N	%	N	%	N	%
Psychology	11	39.3	13	36.1	11	26.2	9	25.0	12	25.5	56	29.6
Literature	3	10.7	5	13.9	5	11.9	7	19.4	8	17.0	28	14.8
History	3	10.7	8	22.2	1	2.4	6	16.7	6	12.8	24	12.7
Mathematics	4	14.3	2	5.6	4	9.5	3	8.3	10	21.3	23	12.2
Art	4	14.3	2	5.6	3	7.1	1	2.8	1	2.1	11	5.8
Biology	2	7.1	2	5.6	2	4.8	1	2.8	3	6.4	10	5.3
Drama					7	16.7	2	5.6	1	2.1	10	5.3
Spanish	1	3.6	2	5.6	2	4.8	2	5.6	1	2.1	8	4.2
Sociology			2	5.6	2	4.8	2	5.6	1	2.1	7	3.7
Environ Studies					2	4.8			3	6.4	5	2.6
Classics					1	2.4	1	2.8	1	2.1	3	1.6
Physics					2	4.8					2	1.1
Accounting	1	3.6									1	0.5
Chemistry					1	2.4					1	0.5
Economics							1	2.8			1	0.5
German							1	2.8			1	0.5
Health/Wellness Promotion							1	2.8			1	0.5
Computer Sci	-	-	-	-	-	-	-	-	-	-	-	-
French	-	-	-	-	-	-	-	-	-	-	-	-
German	-	-	-	-	-	-	-	-	-	-	-	-
Ind Engr Mgmt	-	-	-	-	-	-	-	-	-	-	-	-
Interdisp Sp	-	-	-	-	-	-	-	-	-	-	-	-
Liberal Arts	-	-	-	-	-	-	-	-	-	-	-	-
Management	-	-	-	-	-	-	-	-	-	-	-	-
Mass Comm	-	-	-	-	-	-	-	-	-	-	-	-
Multimedia	-	-	-	-	-	-	-	-	-	-	-	-
Music	-	-	-	-	-	-	-	-	-	-	-	-
Music Tech	-	-	-	-	-	-	-	-	-	-	-	-
Philosophy	-	-	-	-	-	-	-	-	-	-	-	-
Political Sci	-	-	-	-	-	-	-	-	-	-	-	-
Religious Studies	-	-	-	-	-	-	-	-	-	-	-	-
Women, Gender, Sexuality	-	-	-	-	-	-	-	-	-	-	-	-
UNCA Total	28	100.0	36	100.0	42	100.0	36	100.0	47	100.0	189	100.0

Students with double major counted twice for each major but not in total

Table 17
Percent of Graduates Participating in a Study Abroad Program

Major	2006-07			2007-08			2008-09			2009-10			2010-11			5-Yr Total		
	N Grads	N SAGR Grads	% SAGR Grads	N Grads	N SAGR Grads	% SAGR Grads	N Grads	N SAGR Grads	% SAGR Grads	N Grads	N SAGR Grads	% SAGR Grads	N Grads	N SAGR Grads	% SAGR Grads	N Grads	N SAGR Grads	% SAGR Grads
Accounting	16	1	6.3	11	0	0.0	12	0	0.0	19	2	10.5	19	2	10.5	77	5	6.5
Art	35	7	20.0	42	10	23.8	35	6	17.1	51	6	11.8	41	3	7.3	204	32	15.7
Atmospheric Sci	14	1	7.1	22	0	0.0	14	0	0.0	11	0	0.0	10	0	0.0	71	1	1.4
Biology	31	2	6.5	37	3	8.1	29	2	6.9	34	6	17.6	31	7	22.6	162	20	12.3
Chemistry	11	1	9.1	14	2	14.3	5	1	20.0	6	0	0.0	10	0	0.0	46	4	8.7
Classics	2	2	100.0	1	1	100.0	6	3	50.0	7	2	28.6	6	4	66.7	22	12	54.5
Computer Sci	19	0	0.0	4	0	0.0	8	0	0.0	5	0	0.0	12	0	0.0	48	0	0.0
Drama	10	0	0.0	14	1	7.1	16	4	25.0	13	2	15.4	16	2	12.5	69	9	13.0
Economics	15	1	6.7	16	3	18.8	19	2	10.5	16	2	12.5	15	2	13.3	81	10	12.3
Education	28	4	14.3	36	7	19.4	42	9	21.4	36	13	36.1	47	18	38.3	189	51	27.0
Environ Studies	25	3	12.0	55	14	25.5	42	9	21.4	36	13	36.1	50	14	28.0	208	53	25.5
French	6	3	50.0	3	1	33.3	4	3	75.0	2	2	100.0	14	9	64.3	29	18	62.1
German	4	4	100.0	2	2	100.0	2	1	50.0	2	1	50.0	3	2	66.7	13	10	76.9
History	20	5	25.0	39	9	23.1	33	6	18.2	34	5	14.7	28	7	25.0	154	32	20.8
Health/Wellness	7	1	14.3	29	1	3.4	36	3	8.3	41	3	7.3	35	0	0.0	148	8	5.4
Indus Engr Mgmt				2	0	0.0	2	0	0.0	4	0	0.0	2	0	0.0	10	0	0.0
Interdisp Studies	16	3	18.8	7	6	85.7	12	7	58.3	16	10	62.5	20	14	70.0	71	40	56.3
Literature	52	7	13.5	58	7	12.1	46	5	10.9	52	12	23.1	57	15	26.3	265	46	17.4
Mathematics	24	4	16.7	21	3	14.3	30	6	20.0	15	2	13.3	28	6	21.4	118	21	17.8
Mass Comm	38	8	21.1	47	7	14.9	37	4	10.8	31	2	6.5	37	4	10.8	190	25	13.2
Mechatronics							3	0	0.0	5	0	0.0	7	0	0.0	15	0	0.0
Management	58	8	13.8	55	2	3.6	29	3	10.3	57	5	8.8	40	1	2.5	239	19	7.9
Multimedia	17	0	0.0	34	3	8.8	23	2	8.7	28	1	3.6	17	2	11.8	119	8	6.7
Music	11	2	18.2	5	1	20.0	7	0	0.0	4	0	0.0	7	1	14.3	34	4	11.8
Music Technology	6	0	0.0	9	0	0.0	10	0	0.0	7	0	0.0	19	0	0.0	51	0	0.0
Philosophy	9	3	33.3	6	0	0.0	8	1	12.5	12	4	33.3	11	2	18.2	46	10	21.7
Physics	2	0	0.0	8	0	0.0	5	1	20.0	5	1	20.0	4	0	0.0	24	2	8.3
Political Sci	29	10	34.5	31	9	29.0	26	10	38.5	29	9	31.0	33	9	27.3	148	47	31.8
Psychology	95	15	15.8	103	13	12.6	87	14	16.1	97	8	8.2	88	8	9.1	470	58	12.3
Religious Studies										3	0	0.0	5	1	20.0	8	1	12.5
Sociology	26	6	23.1	37	7	18.9	43	10	23.3	34	11	32.4	36	5	13.9	176	39	22.2
Spanish	17	12	70.6	26	18	69.2	25	15	60.0	22	12	54.5	24	12	50.0	114	69	60.5
Women/Gender ...	4	0	0.0	2	1	50.0	3	0	0.0	2	0	0.0	7	0	0.0	18	1	5.6
UNCA	578	94	16.3	704	108	15.3	606	100	16.5	672	109	16.2	685	112	16.4	3245	523	16.1

21

Students with double major counted twice for each major but not in total

Table 18
Percent of Graduates Participating in Undergraduate Research/Creative Projects
by Type of Participation

	Academic Year Ending	N Graduates	Total Participation %	UGR Event %	UGR Course Workload Defn %	UGR Course Other Defn %	Creative Event %	Creative Course %	Research Distinction %
ACCT	2007	16	56.3	12.5	6.3	50.0	0.0	0.0	6.3
	2008	11	45.5	0.0	0.0	45.5	0.0	0.0	0.0
	2009	12	25.0	0.0	8.3	16.7	0.0	0.0	0.0
	2010	19	21.1	5.3	0.0	21.1	0.0	0.0	5.3
	2011	19	21.1	10.5	5.3	10.5	0.0	0.0	0.0
ART	2007	35	100.0	34.3	17.1	22.9	82.9	40.0	5.7
	2008	42	100.0	23.8	14.3	28.6	81.0	35.7	2.4
	2009	35	100.0	45.7	25.7	28.6	77.1	31.4	28.6
	2010	51	100.0	86.3	2.0	29.4	74.5	29.4	41.2
	2011	41	100.0	92.7	24.4	24.4	73.2	17.1	36.6
ATMS	2007	14	28.6	28.6	28.6	0.0	0.0	0.0	14.3
	2008	22	36.4	18.2	36.4	0.0	0.0	0.0	13.6
	2009	14	28.6	21.4	28.6	0.0	0.0	0.0	21.4
	2010	11	54.5	18.2	54.5	0.0	0.0	0.0	18.2
	2011	10	80.0	30.0	80.0	10.0	0.0	0.0	10.0
BIOL	2007	31	54.8	35.5	45.2	6.5	0.0	0.0	19.4
	2008	37	40.5	35.1	32.4	5.4	0.0	0.0	24.3
	2009	29	48.3	37.9	44.8	10.3	0.0	0.0	20.7
	2010	34	35.3	29.4	29.4	5.9	0.0	0.0	14.7
	2011	31	64.5	61.3	61.3	0.0	0.0	0.0	41.9
CHEM	2007	11	100.0	81.8	100.0	18.2	0.0	0.0	45.5
	2008	14	100.0	92.9	100.0	0.0	0.0	0.0	57.1
	2009	5	100.0	100.0	100.0	20.0	0.0	0.0	60.0
	2010	6	100.0	83.3	100.0	0.0	0.0	0.0	83.3
	2011	10	100.0	100.0	100.0	0.0	0.0	0.0	70.0
CLAS	2007	2	100.0	100.0	0.0	100.0	0.0	0.0	50.0
	2008	1	100.0	100.0	0.0	100.0	0.0	0.0	100.0
	2009	6	100.0	33.3	16.7	100.0	0.0	0.0	16.7
	2010	7	100.0	42.9	28.6	100.0	0.0	0.0	28.6
	2011	6	100.0	50.0	16.7	100.0	0.0	0.0	16.7
CSCI	2007	19	15.8	10.5	5.3	0.0	0.0	0.0	0.0
	2008	4	25.0	25.0	0.0	0.0	0.0	0.0	25.0
	2009	8	37.5	37.5	12.5	0.0	0.0	0.0	25.0
	2010	5	60.0	40.0	0.0	0.0	0.0	20.0	0.0
	2011	12	25.0	16.7	16.7	0.0	0.0	0.0	0.0
DRAM	2007	10	100.0	20.0	80.0	20.0	0.0	0.0	0.0
	2008	14	42.9	14.3	28.6	14.3	0.0	7.1	0.0
	2009	16	75.0	25.0	25.0	56.3	0.0	0.0	6.3
	2010	13	53.8	7.7	30.8	23.1	0.0	7.7	0.0
	2011	16	43.8	6.3	31.3	0.0	6.3	6.3	0.0
ECON	2007	15	100.0	33.3	13.3	100.0	0.0	0.0	20.0
	2008	16	100.0	87.5	12.5	100.0	0.0	6.3	12.5
	2009	19	100.0	26.3	10.5	100.0	0.0	0.0	5.3
	2010	16	100.0	81.3	0.0	100.0	0.0	0.0	18.8
	2011	15	100.0	66.7	6.7	100.0	0.0	0.0	13.3
EDUC	2007	28	100.0	21.4	3.6	100.0	0.0	0.0	0.0
	2008	35	100.0	85.7	0.0	100.0	5.7	5.7	2.9
	2009	42	100.0	40.5	16.7	100.0	0.0	0.0	7.1
	2010	31	100.0	87.1	19.4	100.0	0.0	0.0	0.0
	2011	44	50.0	31.8	18.2	31.8	0.0	0.0	6.8

	Academic Year Ending	N Graduates	Total Participation %	UGR Event %	UGR Course Workload Defn %	UGR Course Other Defn %	Creative Event %	Creative Course %	Research Distinction %
ENVR	2007	25	52.0	44.0	48.0	0.0	4.0	0.0	28.0
	2008	55	43.6	38.2	32.7	1.8	1.8	0.0	20.0
	2009	42	40.5	23.8	28.6	11.9	0.0	0.0	9.5
	2010	36	38.9	30.6	27.8	5.6	0.0	0.0	19.4
	2011	50	36.0	30.0	28.0	2.0	0.0	0.0	8.0
FREN	2007	6	66.7	50.0	33.3	0.0	16.7	0.0	16.7
	2008	3	33.3	33.3	33.3	0.0	0.0	0.0	0.0
	2009	4	50.0	25.0	25.0	0.0	0.0	0.0	0.0
	2010	2	100.0	50.0	100.0	0.0	0.0	0.0	0.0
	2011	14	50.0	35.7	28.6	28.6	7.1	0.0	7.1
GERM	2007	4	25.0	25.0	0.0	25.0	0.0	0.0	0.0
	2008	2	0.0	0.0	0.0	0.0	0.0	0.0	0.0
	2009	2	50.0	50.0	0.0	50.0	0.0	0.0	50.0
	2010	2	50.0	50.0	0.0	50.0	0.0	0.0	0.0
	2011	3	66.7	33.3	66.7	33.3	0.0	0.0	0.0
HIST	2007	20	100.0	15.0	5.0	100.0	0.0	0.0	0.0
	2008	39	100.0	35.9	5.1	100.0	0.0	0.0	7.7
	2009	33	100.0	30.3	12.1	100.0	0.0	0.0	12.1
	2010	34	100.0	23.5	2.9	100.0	0.0	0.0	2.9
	2011	28	100.0	28.6	10.7	100.0	0.0	0.0	14.3
HWP	2007	7	28.6	0.0	28.6	0.0	0.0	0.0	0.0
	2008	29	20.7	17.2	17.2	0.0	0.0	0.0	10.3
	2009	36	36.1	16.7	27.8	2.8	0.0	2.8	5.6
	2010	41	22.0	12.2	17.1	2.4	0.0	0.0	2.4
	2011	35	28.6	11.4	20.0	2.9	0.0	0.0	0.0
IEMT	2008	2	100.0	100.0	0.0	50.0	0.0	0.0	100.0
	2009	2	50.0	50.0	0.0	0.0	0.0	0.0	50.0
	2010	4	100.0	50.0	0.0	50.0	0.0	0.0	50.0
	2011	2	100.0	50.0	0.0	50.0	0.0	0.0	50.0
IST	2007	16	93.8	50.0	43.8	50.0	0.0	0.0	6.3
	2008	7	100.0	57.1	57.1	42.9	0.0	0.0	0.0
	2009	12	100.0	50.0	66.7	50.0	0.0	0.0	16.7
	2010	16	100.0	62.5	75.0	18.8	0.0	0.0	31.3
	2011	20	100.0	75.0	90.0	0.0	0.0	0.0	30.0
LIT	2007	52	100.0	15.4	13.5	100.0	0.0	1.9	5.8
	2008	58	100.0	25.9	20.7	100.0	0.0	1.7	3.4
	2009	46	100.0	28.3	15.2	100.0	2.2	2.2	8.7
	2010	52	100.0	59.6	51.9	100.0	0.0	5.8	7.7
	2011	57	100.0	73.7	66.7	100.0	0.0	1.8	10.5
MATH	2007	24	58.3	41.7	33.3	16.7	0.0	0.0	8.3
	2008	21	42.9	42.9	19.0	9.5	0.0	0.0	14.3
	2009	30	63.3	46.7	33.3	20.0	0.0	0.0	10.0
	2010	15	66.7	46.7	40.0	20.0	0.0	0.0	20.0
	2011	28	17.9	14.3	17.9	0.0	0.0	0.0	7.1
MCOM	2007	38	26.3	15.8	7.9	0.0	0.0	10.5	0.0
	2008	47	38.3	23.4	25.5	0.0	2.1	10.6	0.0
	2009	37	51.4	24.3	24.3	5.4	2.7	24.3	0.0
	2010	31	48.4	6.5	29.0	0.0	0.0	22.6	0.0
	2011	37	48.6	24.3	32.4	5.4	2.7	21.6	2.7
MCTR	2009	3	0.0	0.0	0.0	0.0	0.0	0.0	0.0
	2010	5	0.0	0.0	0.0	0.0	0.0	0.0	0.0
	2011	7	14.3	14.3	0.0	0.0	0.0	0.0	0.0

	Academic Year Ending	N Graduates	Total Participation %	UGR Event %	UGR Course Workload Defn %	UGR Course Other Defn %	Creative Event %	Creative Course %	Research Distinction %
MGMT	2007	58	100.0	1.7	1.7	100.0	0.0	0.0	1.7
	2008	55	100.0	7.3	7.3	100.0	0.0	0.0	5.5
	2009	29	100.0	10.3	10.3	100.0	0.0	0.0	10.3
	2010	57	100.0	8.8	12.3	100.0	0.0	0.0	8.8
	2011	40	100.0	10.0	15.0	100.0	0.0	0.0	7.5
MMAS	2007	17	100.0	0.0	5.9	0.0	0.0	100.0	0.0
	2008	34	100.0	0.0	2.9	0.0	2.9	100.0	0.0
	2009	23	100.0	17.4	8.7	0.0	4.3	100.0	8.7
	2010	28	100.0	28.6	14.3	0.0	0.0	100.0	0.0
	2011	17	100.0	5.9	5.9	0.0	0.0	100.0	5.9
MUSC	2007	11	27.3	9.1	27.3	0.0	0.0	0.0	9.1
	2008	5	40.0	40.0	40.0	0.0	0.0	0.0	0.0
	2009	7	28.6	28.6	14.3	0.0	0.0	0.0	0.0
	2010	4	0.0	0.0	0.0	0.0	0.0	0.0	0.0
	2011	7	0.0	0.0	0.0	0.0	0.0	0.0	0.0
MUST	2007	6	33.3	0.0	33.3	0.0	0.0	0.0	0.0
	2008	9	55.6	0.0	55.6	0.0	0.0	0.0	0.0
	2009	10	50.0	0.0	40.0	10.0	0.0	0.0	0.0
	2010	7	71.4	14.3	57.1	28.6	0.0	0.0	0.0
	2011	19	52.6	0.0	52.6	0.0	0.0	0.0	0.0
PHIL	2007	9	100.0	33.3	66.7	100.0	0.0	0.0	0.0
	2008	6	100.0	83.3	100.0	100.0	0.0	0.0	16.7
	2009	8	100.0	37.5	100.0	75.0	0.0	0.0	25.0
	2010	12	100.0	25.0	100.0	83.3	0.0	0.0	0.0
	2011	11	100.0	45.5	100.0	90.9	0.0	0.0	18.2
PHYS	2007	2	100.0	100.0	50.0	0.0	0.0	0.0	100.0
	2008	8	37.5	25.0	25.0	12.5	0.0	0.0	0.0
	2009	5	80.0	20.0	60.0	40.0	0.0	0.0	0.0
	2010	5	40.0	20.0	20.0	0.0	0.0	0.0	0.0
	2011	4	50.0	50.0	0.0	0.0	0.0	0.0	0.0
POLS	2007	29	58.6	34.5	13.8	34.5	0.0	0.0	6.9
	2008	31	64.5	25.8	12.9	48.4	0.0	0.0	3.2
	2009	26	50.0	42.3	11.5	15.4	0.0	0.0	0.0
	2010	29	58.6	34.5	10.3	41.4	0.0	0.0	0.0
	2011	33	51.5	15.2	15.2	36.4	0.0	0.0	6.1
PSYC	2007	95	36.8	16.8	17.9	18.9	1.1	0.0	5.3
	2008	103	46.6	37.9	16.5	20.4	1.0	0.0	3.9
	2009	87	52.9	29.9	33.3	14.9	1.1	0.0	9.2
	2010	97	44.3	32.0	25.8	9.3	0.0	0.0	5.2
	2011	88	68.2	61.4	13.6	1.1	0.0	0.0	10.2
RELS	2010	3	33.3	33.3	0.0	0.0	0.0	0.0	33.3
	2011	5	80.0	60.0	40.0	20.0	0.0	0.0	40.0
SOC	2007	26	30.8	7.7	23.1	3.8	0.0	0.0	3.8
	2008	37	29.7	16.2	13.5	10.8	0.0	0.0	5.4
	2009	43	30.2	18.6	14.0	7.0	0.0	0.0	4.7
	2010	34	29.4	23.5	23.5	5.9	0.0	0.0	11.8
	2011	36	22.2	16.7	19.4	0.0	0.0	0.0	8.3
SPAN	2007	17	47.1	17.6	29.4	23.5	0.0	0.0	0.0
	2008	26	38.5	30.8	23.1	19.2	0.0	0.0	7.7
	2009	25	44.0	24.0	28.0	24.0	0.0	0.0	12.0
	2010	22	63.6	40.9	31.8	22.7	4.5	4.5	22.7
	2011	24	45.8	20.8	33.3	4.2	0.0	4.2	4.2

	Academic Year Ending	N Graduates	Total Participation %	UGR Event %	UGR Course Workload Defn %	UGR Course Other Defn %	Creative Event %	Creative Course %	Research Distinction %
WGSS	2007	4	0.0	0.0	0.0	0.0	0.0	0.0	0.0
	2008	2	50.0	50.0	0.0	50.0	0.0	0.0	0.0
	2009	3	33.3	0.0	33.3	0.0	0.0	0.0	0.0
	2010	2	50.0	50.0	0.0	0.0	0.0	0.0	0.0
	2011	7	71.4	42.9	57.1	14.3	14.3	0.0	0.0
UNCA	2007	578	62.3	20.1	20.4	36.0	5.0	6.1	6.7
	2008	704	62.9	28.4	20.7	33.9	4.8	7.8	8.5
	2009	606	62.0	26.4	24.1	32.0	4.5	7.1	9.4
	2010	672	64.6	33.2	23.7	34.2	5.7	8.0	11.0
	2011	685	62.3	37.2	29.8	25.7	4.4	4.5	11.4

Table 19
Percent of Graduates Participating in Service Learning

Major	2005-06			2006-07			2007-08			2008-09			2009-10			5-Yr Total		
	N Grads	N SL Grads	% SL Grads	N Grads	N SL Grads	% SL Grads	N Grads	N SL Grads	% SL Grads	N Grads	N SL Grads	% SL Grads	N Grads	N SL Grads	% SL Grads	N Grads	N SL Grads	% SL Grads
Accounting	16	7	43.8	11	5	45.5	12	4	33.3	19	10	52.6	19	13	68.4	77	39	50.6
Art	35	17	48.6	42	16	38.1	35	12	34.3	51	18	35.3	41	16	39.0	204	79	38.7
Atmospheric Sci	14	8	57.1	22	11	50.0	14	10	71.4	11	1	9.1	10	3	30.0	71	33	46.5
Biology	31	17	54.8	37	20	54.1	29	20	69.0	34	26	76.5	31	21	67.7	162	104	64.2
Chemistry	11	6	54.5	14	7	50.0	5	3	60.0	6	0	0.0	10	3	30.0	46	19	41.3
Classics	2	1	50.0	1	1	100.0	6	5	83.3	7	3	42.9	6	2	33.3	22	12	54.5
Computer Sci	19	14	73.7	4	3	75.0	8	7	87.5	5	5	100.0	12	12	100.0	48	41	85.4
Drama	10	6	60.0	14	5	35.7	16	13	81.3	13	12	92.3	16	10	62.5	69	46	66.7
Economics	15	11	73.3	16	10	62.5	19	8	42.1	16	7	43.8	15	8	53.3	81	44	54.3
Education	28	23	82.1	35	26	74.3	42	35	83.3	31	27	87.1	47	41	87.2	183	152	83.1
Environ Studies	25	21	84.0	55	36	65.5	42	20	47.6	36	24	66.7	50	30	60.0	208	131	63.0
French	6	4	66.7	3	1	33.3	4	1	25.0	2	1	50.0	14	7	50.0	29	14	48.3
German	4	3	75.0	2	2	100.0	2	0	0.0	2	1	50.0	3	1	33.3	13	7	53.8
History	20	14	70.0	39	21	53.8	33	17	51.5	34	14	41.2	28	14	50.0	154	80	51.9
Health/Wellness	7	7	100.0	29	29	100.0	36	36	100.0	41	41	100.0	35	35	100.0	148	148	100.0
Indus Engr Mgmt				2	1	50.0	2	1	50.0	4	0	0.0	2	1	50.0	10	3	30.0
Interdisp Studies	16	9	56.3	7	6	85.7	12	4	33.3	16	8	50.0	20	15	75.0	71	42	59.2
Literature	52	27	51.9	58	35	60.3	46	27	58.7	52	33	63.5	57	30	52.6	265	152	57.4
Mathematics	24	14	58.3	21	12	57.1	30	15	50.0	15	9	60.0	28	17	60.7	118	67	56.8
Mass Comm	38	18	47.4	47	21	44.7	37	7	18.9	31	10	32.3	37	29	78.4	190	85	44.7
Mechatronics							3	2	66.7	5	4	80.0	7	4	57.1	15	10	66.7
Management	58	47	81.0	55	51	92.7	29	14	48.3	57	37	64.9	40	28	70.0	239	177	74.1
Multimedia	17	8	47.1	34	15	44.1	23	9	39.1	28	7	25.0	17	9	52.9	119	48	40.3
Music	11	8	72.7	5	4	80.0	7	1	14.3	4	2	50.0	7	1	14.3	34	16	47.1
Music Technology	6	2	33.3	9	5	55.6	10	1	10.0	7	2	28.6	19	3	15.8	51	13	25.5
Philosophy	9	4	44.4	6	5	83.3	8	3	37.5	12	1	8.3	11	6	54.5	46	19	41.3
Physics	2	2	100.0	8	5	62.5	5	2	40.0	5	0	0.0	4	3	75.0	24	12	50.0
Political Sci	29	18	62.1	31	20	64.5	26	13	50.0	29	16	55.2	33	17	51.5	148	84	56.8
Psychology	95	65	68.4	103	61	59.2	87	54	62.1	97	64	66.0	88	56	63.6	470	300	63.8
Religious Studies										3	1	33.3	5	3	60.0	8	4	50.0
Sociology	26	20	76.9	37	22	59.5	43	24	55.8	34	18	52.9	36	18	50.0	176	102	58.0
Spanish	17	15	88.2	26	16	61.5	25	17	68.0	22	14	63.6	24	11	45.8	114	73	64.0
Women/Gender/Sexuality	4	1	25.0	2	0	0.0	3	2	66.7	2	1	50.0	7	4	57.1	18	8	44.4
UNCA	578	362	62.6	704	424	60.2	606	322	53.1	672	372	55.4	685	400	58.4	3245	1880	57.9

Students with double major counted twice for each major but not in total

Table 20
Distribution of Declared Clusters for Baccalaureate Graduates under the ILS Curriculum

Cluster	2007-08		2008-09		2009-10		2010-11		All Years	
	N	Percent	N	Percent	N	Percent	N	Percent	N	Percent
CL01-Globalization and Environmental Issues	54	20.5	85	17.9	102	18.2	99	17.2	340	18.1
CL02-The Science and Politics of Human Health ...	71	27.0	130	27.4	122	21.8	117	20.3	440	23.5
CL03-Technology, Society, and Culture	16	6.1	25	5.3	32	5.7	31	5.4	104	5.5
CL04-Perception: Senses, Self, and Society	83	31.6	153	32.2	175	31.3	145	25.1	556	29.7
CL05-Transformations in Appalachia	19	7.2	29	6.1	30	5.4	29	5.0	107	5.7
CL06-Latin American Studies	4	1.5	9	1.9	13	2.3	13	2.3	39	2.1
CL07-Belief Systems in Our Universe	16	6.1	36	7.6	47	8.4	58	10.1	157	8.4
CL08-The Greek Experience			1	0.2			4	0.7	5	0.3
CL09-Food for Thought: Engaging the Citizen....			2	0.4	7	1.3	15	2.6	24	1.3
CL10-Identity and Its Expressions			5	1.1	20	3.6	40	6.9	65	3.5
CL11-Human Development of Scientific Knowledge					2	0.4	6	1.0	8	0.4
CL12-Applied Ethics					4	0.7	8	1.4	12	0.6
CL13-Black Creative Experiences										
CL14-The Sensory Environment					5	0.9	11	1.9	16	0.9
CL15-Mechanical, Electrical and Optical Inventions							1	0.2	1	0.1
All Clusters	263	100.0	475	100.0	559	100.0	577	100.0	1874	100.0

Table 21

**Distribution of Baccalaureate Graduates by Declared Cluster and Major
2007-08 through 2010-11 Graduates with Declared Clusters**

	N with Declared Cluster	CL01	CL02	CL03	CL04	CL05	CL06	CL07	CL08	CL09	CL10	CL11	CL12	CL13	CL14	CL15
		%	%	%	%	%	%	%	%	%	%	%	%	%	%	%
Accounting	40	20.0	47.5		22.5		2.5	2.5		2.5	2.5					
Art	112	6.3	8.9	0.9	57.1	4.5	7.1	6.3		0.9	1.8		1.8		4.5	
Atmospheric Sci	49	51.0		34.7	10.2	2.0		2.0								
Biology	100	9.0	75.0	6.0	3.0	3.0		3.0			1.0					
Chemistry	25	16.0	40.0	24.0			4.0	16.0								
Classics	19	5.3	5.3		26.3	21.1		31.6	10.5							
Computer Sci	25	20.0	16.0	16.0	24.0		4.0	12.0							8.0	
Drama	51	2.0	9.8		39.2	3.9		3.9	2.0		33.3	2.0			3.9	
Economics	43	44.2	11.6	2.3	18.6	16.3		2.3		2.3			2.3			
Education	117	4.3	29.1	5.1	38.5	3.4	0.9	3.4			9.4	5.1	0.9			
Environ Studies	132	64.4	12.9	5.3	2.3	12.9		1.5				0.8				
French	26	30.8	11.5		46.2	3.8	3.8	3.8								
German	10	20.0	20.0			20.0		40.0								
History	90	15.6	16.7	3.3	18.9	12.2	4.4	21.1	2.2	2.2	2.2				1.1	
Health/Wellness	121	0.8	76.9		5.8	5.8		0.8		9.9						
Indus Engr Mgmt	5			100.0												
Interdisp Studies	44	54.5	2.3		15.9	9.1	6.8	9.1					2.3			
Literature	148	6.8	12.2	2.0	48.0	8.8		11.5		0.7	8.1		1.4		0.7	
Mathematics	60	6.7	25.0	35.0	20.0	3.3		8.3			1.7					
Mass Comm	107	15.9	8.4	0.9	34.6	2.8	1.9	29.9			1.9		3.7			
Mechatronics	14			92.9												7.1
Management	118	37.3	19.5	3.4	33.9	0.8	0.8	1.7	0.8		1.7					
Multimedia	74		1.4		97.3			1.4								
Music	17	17.6	17.6		52.9						5.9				5.9	
Music Technology	34	2.9			91.2			2.9							2.9	
Philosophy	22	13.6	13.6	4.5	22.7			40.9					4.5			
Physics	17		5.9	64.7	23.5			5.9								
Political Sci	86	48.8	22.1		5.8	5.8	2.3	8.1		2.3	2.3		1.2		1.2	
Psychology	252	4.8	34.9	2.8	38.1	2.0	0.8	4.8		0.8	7.1	2.4			1.6	
Religious Studies	4				50.0			50.0								
Sociology	98	11.2	14.3	2.0	21.4	16.3	7.1	21.4		3.1	2.0		1.0			
Spanish	44	9.1	11.4		40.9	18.2	15.9				4.5					
Women/Gender	9		44.4		22.2			11.1			22.2					
UNCA	1874	18.1	23.5	5.5	29.7	5.7	2.1	8.4	0.3	1.3	3.5	0.4	0.6		0.9	0.1

Cluster Descriptions

- CL01-Globalization and Environmental Issues
- CL02-The Science and Politics of Human Health ...
- CL03-Technology, Society, and Culture
- CL04-Perception: Senses, Self, and Society
- CL05-Transformations in Appalachia
- CL06-Latin American Studies
- CL07-Belief Systems in Our Universe
- CL08-The Greek Experience
- CL09-Food for Thought: Engaging the Citizen....
- CL10-Identity and Its Expressions
- CL11-Human Development of Scientific Knowledge
- CL12-Applied Ethics
- CL13-Black Creative Experiences
- CL14-The Sensory Environment
- CL15-Mechanical, Electrical and Optical Inventions